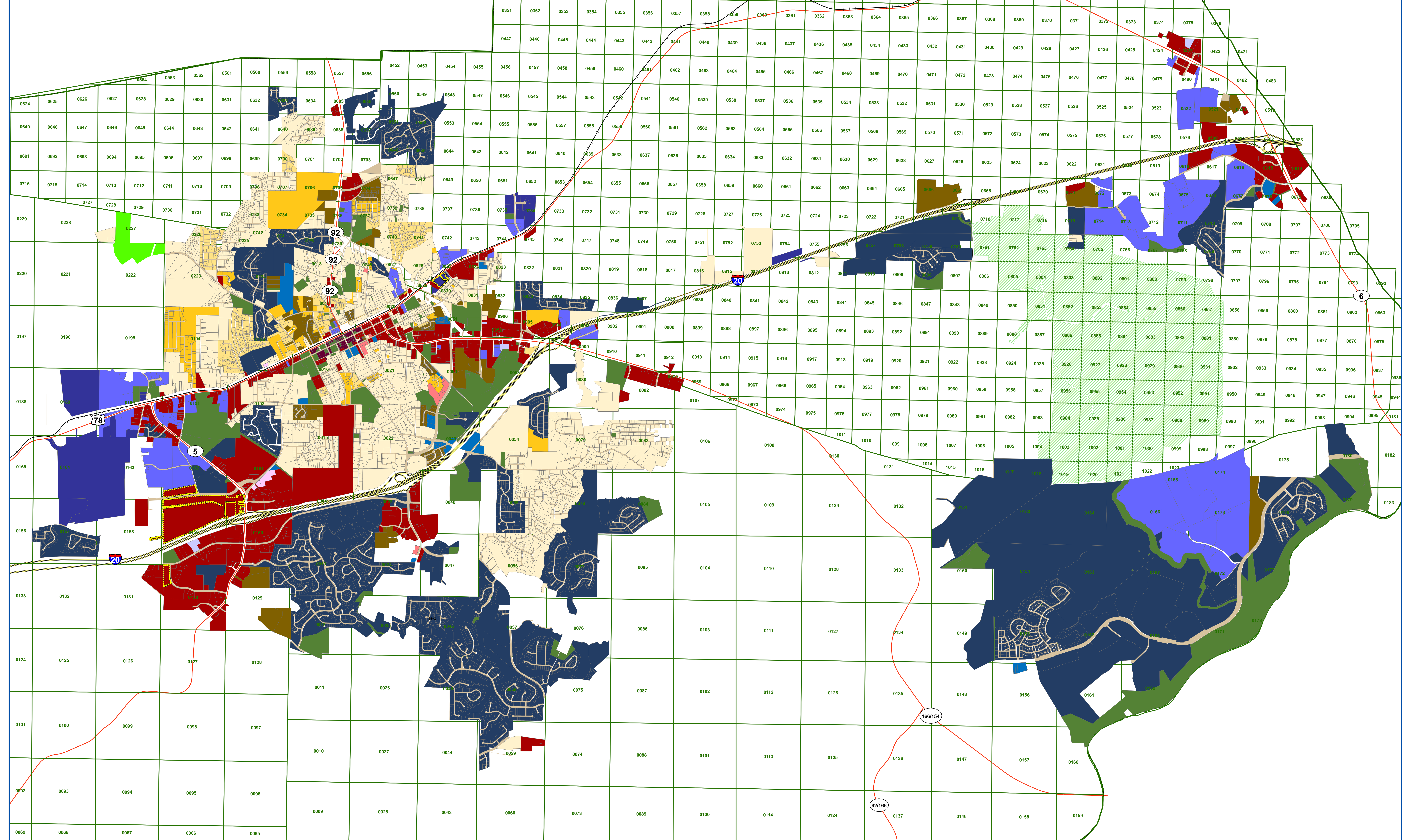


CITY OF DOUGLASVILLE ZONING MAP



- Landlot
- Public - Semi Public ROW
- Publicly Owned Land Not Within City Limits
- Street**
- Interstate
- State;US
- HistoricalDistrict_Project

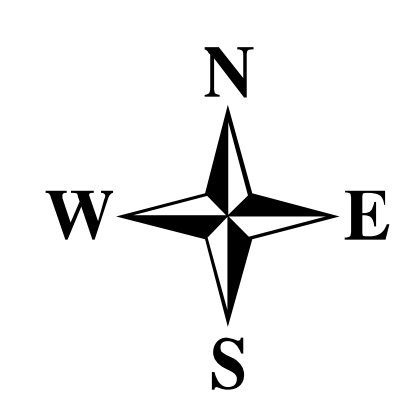
- Zoning Code**
- R-2 Single Family Residential Detached
 - R-3 Single Family Residential Detached
 - R-4 Single Family Residential Detached
 - PRD Planned Residential Development

- PUD Planned Unit Development
- O-I Office Institutional
- NC Neighborhood Commercial
- CBD Central Business District
- RMP Regional Marketplace
- GC General Commercial

- O-D Office Distribution
- LI Light Industrial
- HI Heavy Industrial
- PSP Public - Semi Public
- Other

- Name of Facility**
- Sweetwater Creek State Park
 - County Boundary

- Split Zoning**
- Split Zoning



DC GIS
 Geographic Information Systems Department
 GIS Manager - Ed Dean

Map Disclaimer:
 The Douglas County Government makes no warranties with respect to the accuracy and completeness of the information on this map. It is provided "as is".